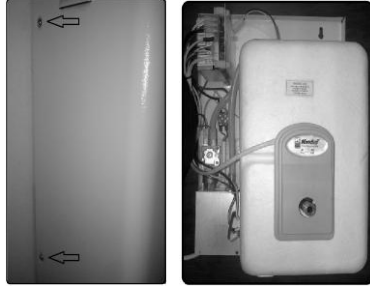


KWIKBOIL INSTALLATION INSTRUCTIONS

STEP 1

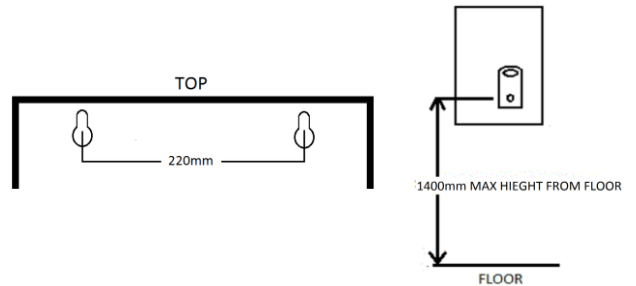
Remove screws on the sides of the cover
Remove cover off unit



Important notice: Failing to remove cover before installation may deem warranty void

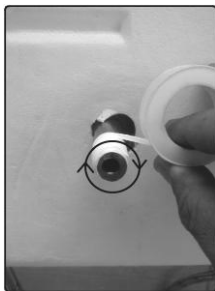
STEP 2

Mount unit onto wall using 6x40mm coach screws or 8mm rawl plugs (8mm rawl plugs must be used on 25L)
NOTE: Unit should **not** be mounted higher than 1400mm from outlet to floor



STEP 3

Apply thread tape (PTFE tape) around tap shaft in a clockwise direction. A role of thread tape is supplied in box.



STEP 4

Fit face plate and tap spacer over the tap shaft



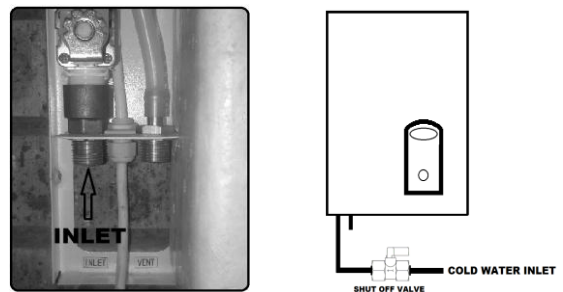
STEP 5

Screw tap onto tap shaft in a clockwise direction being careful not to cross thread. Give tap approx. four turns till tap is strait and handle is on top then tighten lock screw on underside of tap



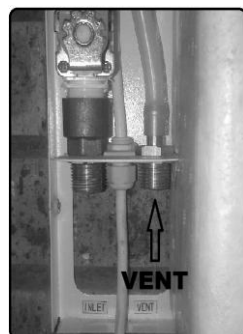
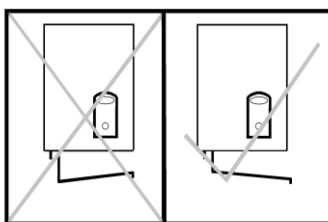
STEP 5

Fit **COLD** water supply to the inlet on the left bottom of the unit (solenoid valve)
Unit should be fitted with a shut off valve



STEP 6

Fit vent pipe to unit on the bottom right hand side of unit either over a sink or in a drain.
NOTE: Vent pipe must be free flowing and open at all times and on a down hill angle so water can drain
Never fit a p-trap to vent pipe

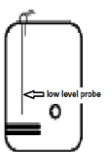


STEP 7

Turn water supply ON and power supply ON.
Solenoid will engage and then put water in unit until the water reaches the low level point. The solenoid will then disengage
NOTE: THIS UNIT DOES NOT FILL UP COMPLETELY WHEN FIRST TURNED ON. IT FILLS TO LOW LEVEL FIRST AND THEN FILLS IN STAGES
Element will now turn on and start heating water
Once water has reached boiling point it will then disengage element and fill with more water

Refit front cover of unit

Please refer to owner's manual on page 10 to do temperature setting



For trouble shooting, product specifications and operation
Please refer to owner's manual

For any queries please contact us
KWIKOT 0118974600